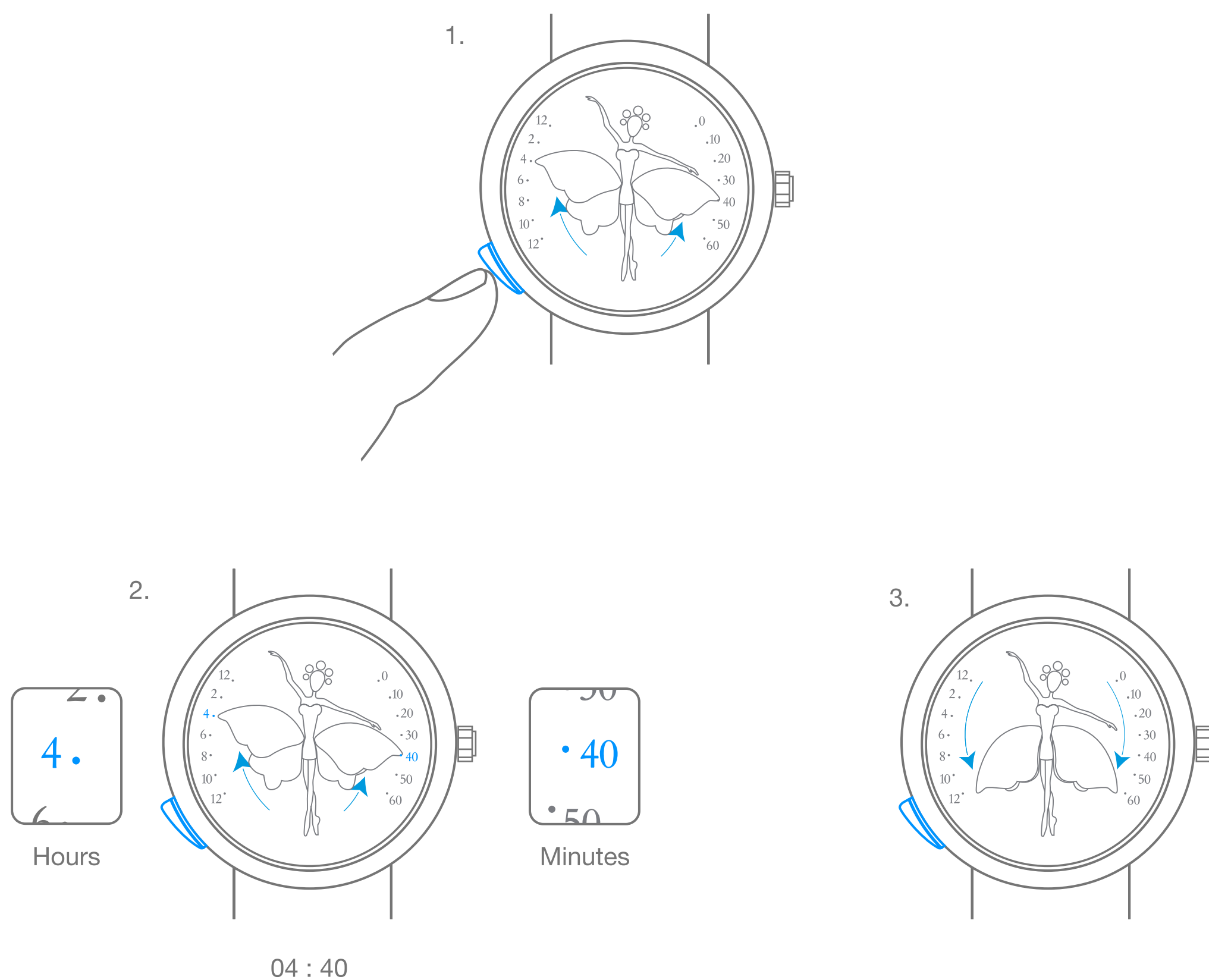


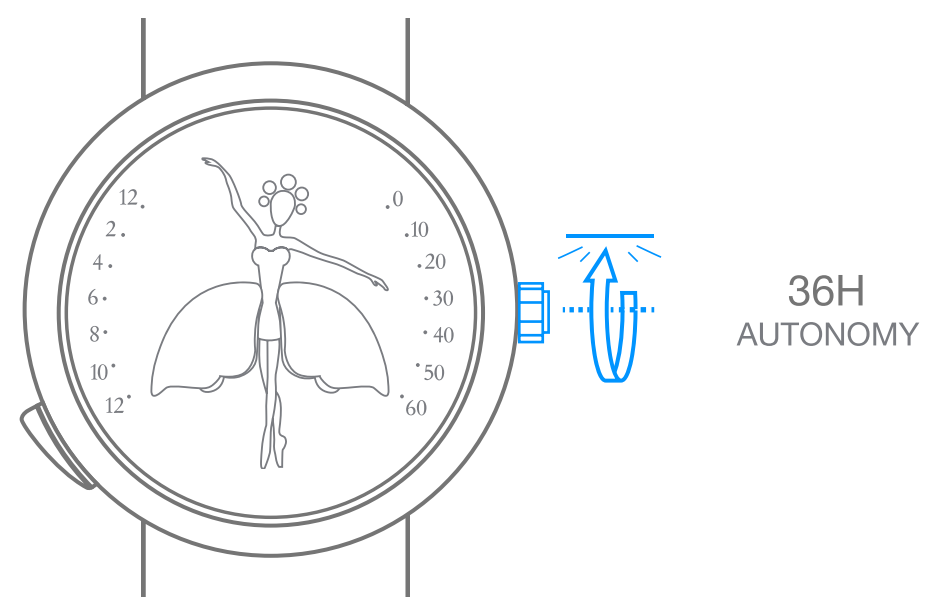
Van Cleef & Arpels

Self-winding mechanical movement with double retrograde and hour on-demand module

1. Read the time



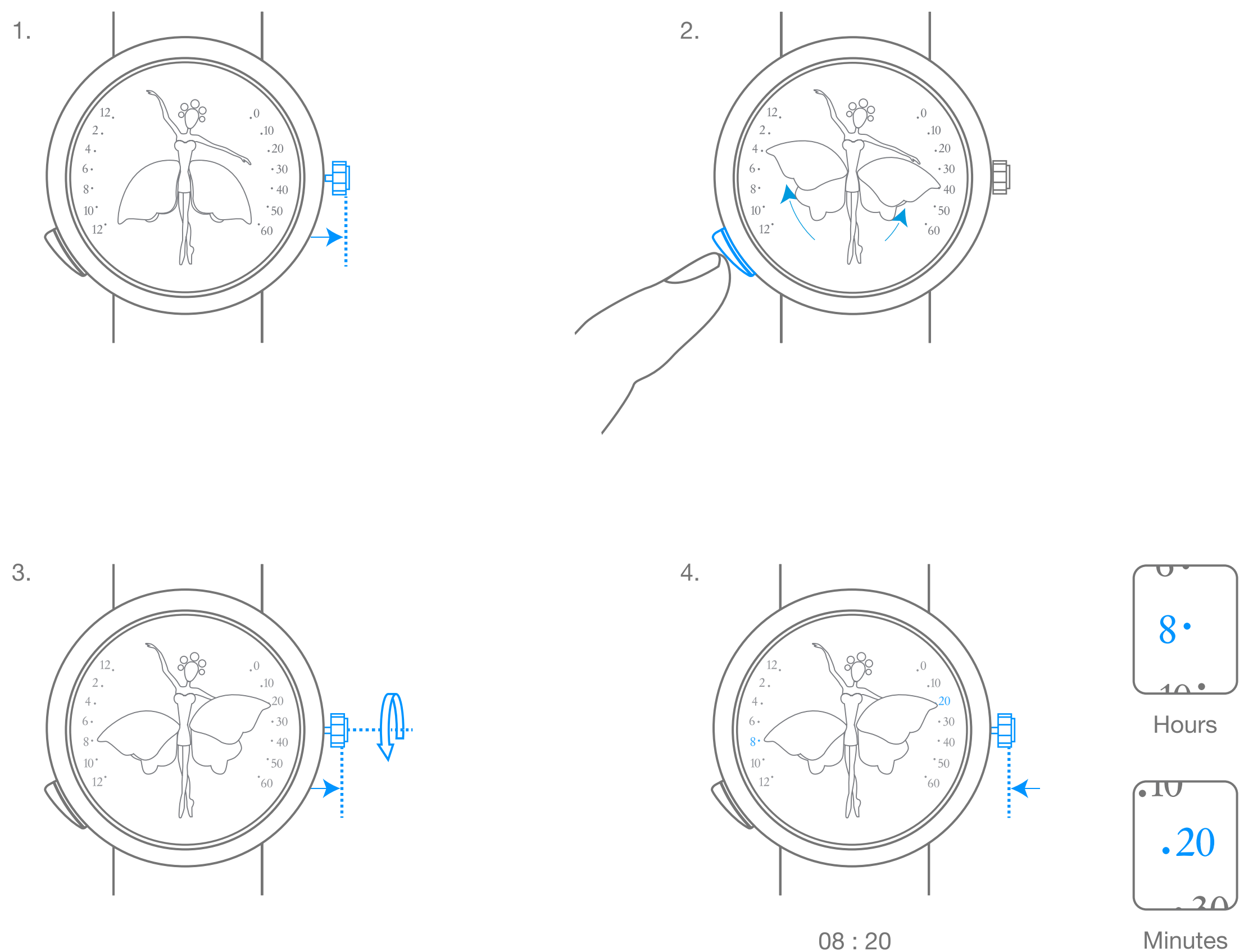
2. Wind the watch



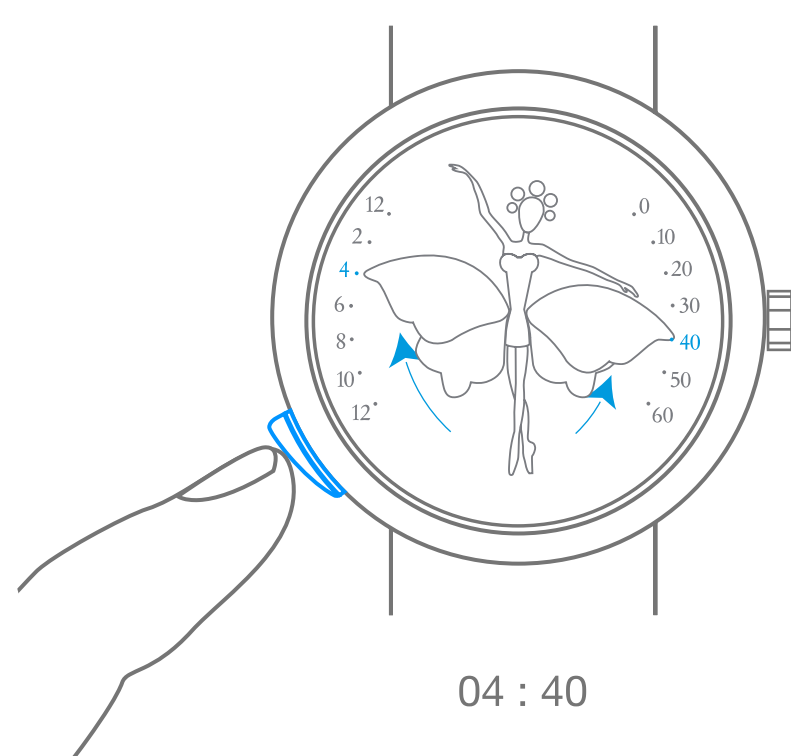
Van Cleef & Arpels

Self-winding mechanical movement with double retrograde and hour on-demand module

3. Set the time



4. Start the hour on-demand

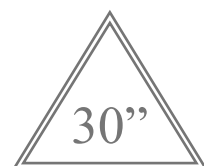


Van Cleef & Arpels

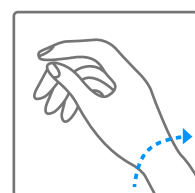
Pictograms

00h
AUTONOMY

Your watch's power reserve



Important note: wait 30 seconds after winding the watch before setting the time



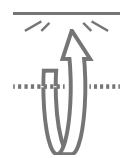
Self-winding through your wrist movement



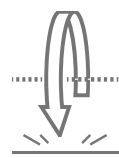
Turning clockwise



Turning counter-clockwise



Turning clockwise until you meet resistance



Turning counter-clockwise until you meet resistance



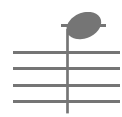
LOCAL TIME

Local time



2ND TIME ZONE

Time in selected country



High-pitched sound



Low-pitched sound